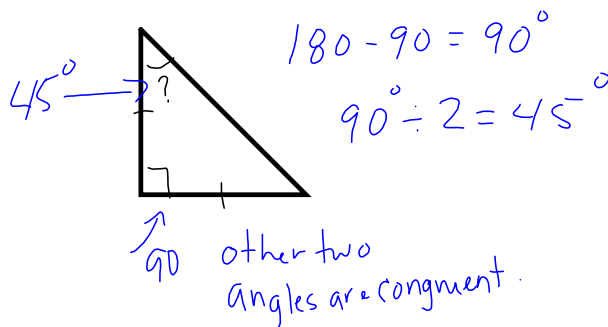
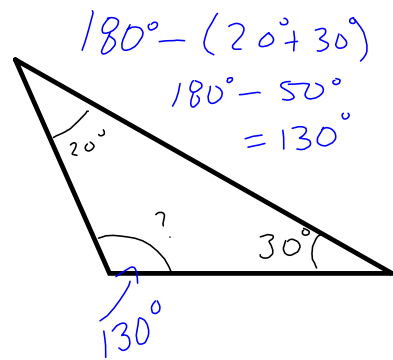
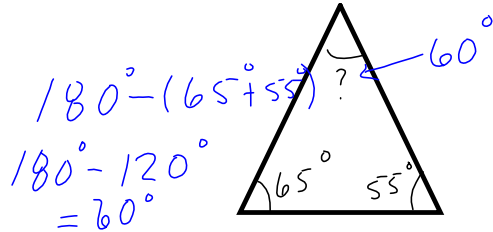


Sum of the Angles in a Triangle

The sum of the angles in a triangle = 180°

Find the missing angle



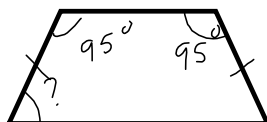
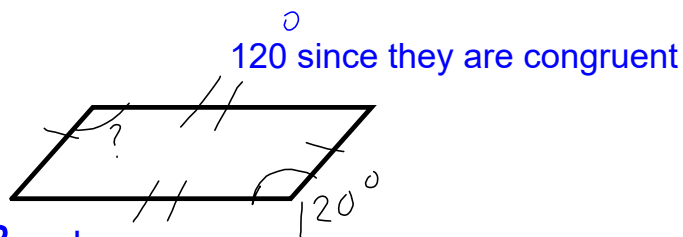
The sum of the Angles in Quadrilaterals

The sum of the angles in quadrilaterals = 360°

Find the missing angle



90° a rectangle has 4 90° angles



$$95^\circ + 95^\circ = 190^\circ$$

$$360^\circ - 190^\circ = 170^\circ$$

$$170^\circ / 2 = 85^\circ$$